



GMT MONTHLY MEMBERSHIP PROGRESS REPORT

Results as of: 1/31/2017

Multiple District 26

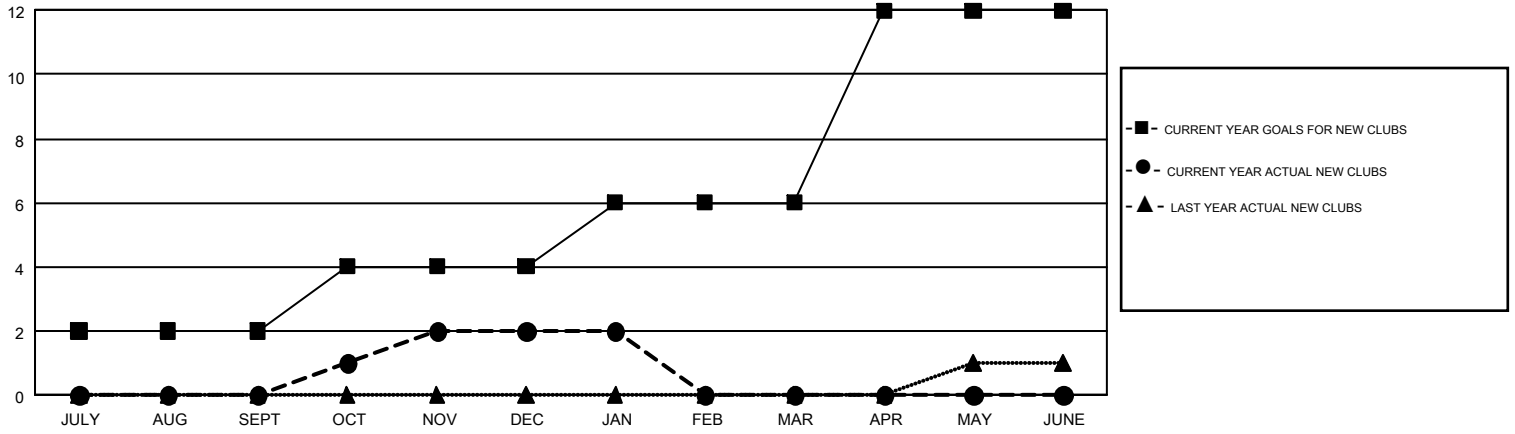
LOCATION: MISSOURI

GMT: HAL GRIFFIN

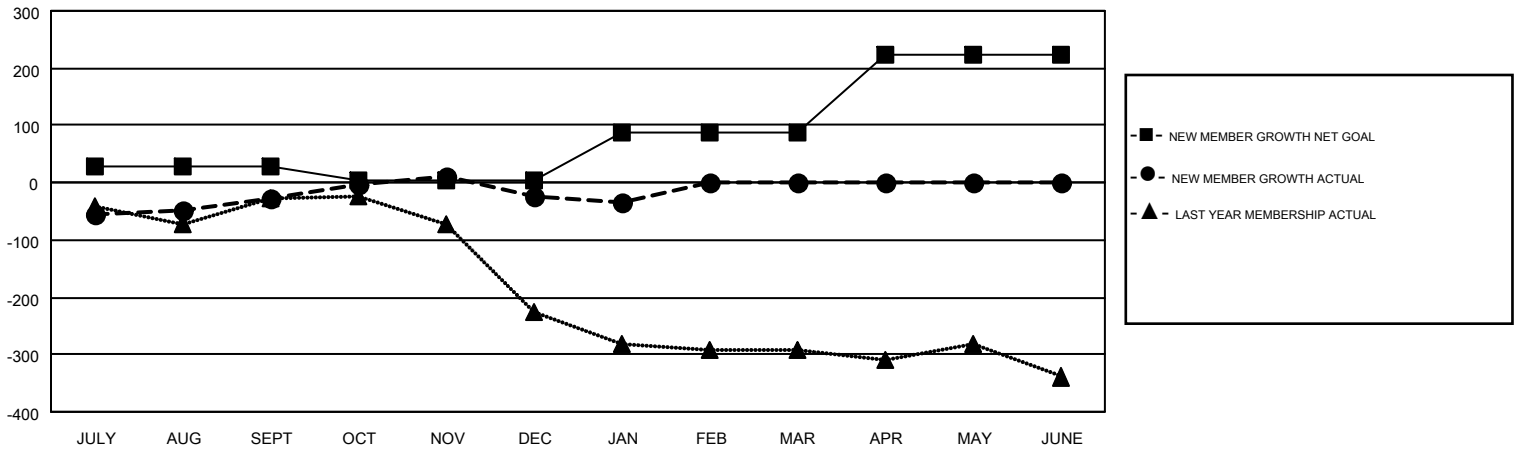
GMT CA 1

Clubs				Members			
RESULTS FOR 2016-2017				RESULTS FOR 2016-2017			
QUARTER	NEW CLUB GOAL	NEW CLUBS	DROPPED CLUBS	QUARTER	NEW MEMBER GROWTH NET GOAL (not reinstated or transfers)	NEW MEMBER GROWTH ACTUAL (not reinstated or transfers)	DROPPED MEMBERS ACTUAL (including transfers)
JULY/AUG/SEPT	2	0	1	JULY/AUG/SEPT	27	234	262
OCT/NOV/DEC	2	2	1	OCT/NOV/DEC	-22	212	209
JAN/FEB/MAR	2	0	1	JAN/FEB/MAR	84	97	105
APR/MAY/JUNE	6	0	0	APR/MAY/JUNE	133	0	0

GOALS AND ACTUAL NEW CLUBS CUMULATIVE



GOALS AND ACTUAL MEMBERS CUMULATIVE



DROPPED CLUBS: 3	173 CLUBS OF 339 ADDED 1 OR MORE NEW MEMBERS	GENDER DISTRIBUTION
DROPPED MEMBERS		MALE 6,784 (74.73%)
DECEASED 67		FEMALE 2,294 (25.27%)
CLUB CANCELLED 24	CLICK HERE FOR CUMULATIVE MEMBERSHIP DATA	TOTAL FAMILY UNIT MEMBERS 1,540
OTHER 485		FAMILY MEMBERS PAYING HALF DUES 789
TOTAL 576		